



■ Features :

- 2:1 wide input range
- High efficiency up to 92%
- 1500VDC I/O isolation
- Built-in EMI filter
- Built-in remote ON / OFF control
- Built-in remote sense
- Trimming output $\pm 10\%$
- Protections: Short circuit / Overload / Over voltage
- Cooling by free air convection
- Six-sided shield metal case
- 100% burn-in test
- Low cost / High reliability
- Output 3.3V/9V available
- Approvals: FCC / EAC / CE / UKCA
- 2 years warranty

■ GTIN CODE

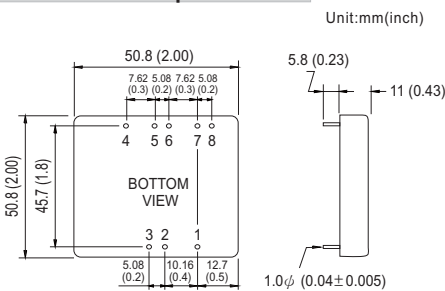
MW Search: <https://www.meanwell.com/serviceGTIN.aspx>



SPECIFICATION

| ORDER NO. | SKA40A-05 | SKA40B-05 | SKA40C-05 | SKA40A-12 | SKA40B-12 | SKA40C-12 | SKA40A-15 | SKA40B-15 | SKA40C-15 | |
|----------------------|----------------------------------|--|-----------|-----------|-------------|-----------|-----------|--------------|-----------|-----|
| OUTPUT | DC VOLTAGE | 5V | | | 12V | | | 15V | | |
| | CURRENT RANGE | 0.7 ~ 7A | | | 0.3 ~ 3.33A | | | 0.26 ~ 2.67A | | |
| | RATED POWER | 35W | | | 40W | | | 40W | | |
| | RIPPLE & NOISE (max.) Note.2 | 60mVp-p | | | 80mVp-p | | | 100mVp-p | | |
| | LINE REGULATION Note.3 | $\pm 0.5\%$ | | | | | | | | |
| | LOAD REGULATION Note.4 | $\pm 0.5\%$ | | | | | | | | |
| | VOLTAGE ACCURACY | $\pm 2.0\%$ | | | | | | | | |
| | SWITCHING FREQUENCY | 200KHz min. | | | | | | | | |
| INPUT | EXTERNAL CAPACITANCE LOAD (max.) | 1000uF | | | | | | | | |
| | EXTERNAL TRIM Adj. RANGE(Typ.) | $\pm 10\%$ | | | | | | | | |
| | VOLTAGE RANGE | A: 9 ~ 18VDC B: 18 ~ 36VDC C: 36 ~ 75VDC | | | | | | | | |
| | EFFICIENCY (Typ.) | 91% | 92% | 91% | 90% | 90% | 88.5% | 90% | 90.5% | 90% |
| | DC CURRENT | Full load A: 3850mA B: 1900mA C: 1000mA No load A: 150mA B: 100mA C: 65mA | | | | | | | | |
| | FILTER | Pi network | | | | | | | | |
| | REMOTE CONTROL | Power ON : R.C ~ -Vin > 2.5VDC or open circuit ; Power OFF : R.C ~ -Vin < 0.5VDC or short | | | | | | | | |
| | PROTECTION | Fuse recommended | | | | | | | | |
| PROTECTION (Note. 5) | OVER CURRENT | 110% ~ 180% rated output power Protection type : Hiccup mode, recovers automatically after fault condition is removed | | | | | | | | |
| | SHORT CIRCUIT | All output equipped with short circuit Protection type : Hiccup mode, recovers automatically after fault condition is removed | | | | | | | | |
| | OVER VOLTAGE | 5Vo : 7V ~ 8.95V ; 12Vo : 15V ~ 19.2V ; 15Vo : 18V ~ 23.3V Protection type : Clamp by TVS diode | | | | | | | | |
| ENVIRONMENT | WORKING TEMP. | -40 ~ +80°C (Refer to "Derating Curve") | | | | | | | | |
| | WORKING HUMIDITY | 20% ~ 90% RH non-condensing | | | | | | | | |
| | STORAGE TEMP., HUMIDITY | -55 ~ +105°C, 10 ~ 95% RH | | | | | | | | |
| | TEMP. COEFFICIENT | $\pm 0.03\% / ^\circ\text{C}$ (0 ~ 50°C) | | | | | | | | |
| | VIBRATION | 10 ~ 500Hz, 2G 10min./1cycle, period for 60min. each along X, Y, Z axes | | | | | | | | |
| SAFETY & EMC | SAFETY STANDARDS | EAC TP TC 020/2011 (EAC TP TC 004 for 48Vin type only) approved | | | | | | | | |
| | WITHSTAND VOLTAGE | I/P-O/P: 1.5KVDC | | | | | | | | |
| | ISOLATION RESISTANCE | I/P-O/P: 100M Ohms / 500VDC / 25°C / 70% RH | | | | | | | | |
| | EMC EMISSION | Compliance to BS EN/EN55032 Class A, FCC part 15 Class A, EAC TP TC 020 | | | | | | | | |
| OTHERS | EMC IMMUNITY | Compliance to BS EN/EN61000-4-2,3,4,5,6,8, light industry level, criteria A, EAC TP TC 020 | | | | | | | | |
| | DIMENSION | 50.8*50.8*11.0 mm or 2**2**0.43" inch (L*W*H) | | | | | | | | |
| | PACKING | 50g ; 5pcs/per tube, 200pcs/40 tube/per carton | | | | | | | | |

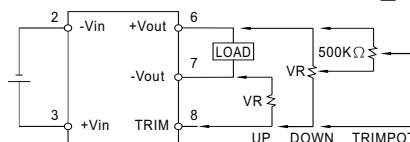
■ Mechanical Specification



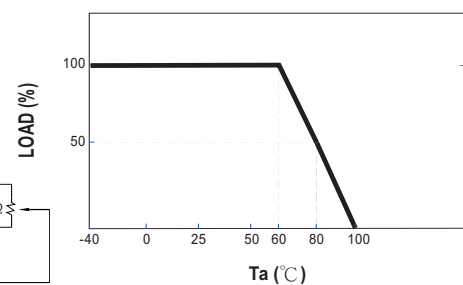
■ Pin Configuration

| Pin No. | Output | Pin No. | Output |
|---------|--------|---------|--------|
| 1 | R.C | 5 | +R.S |
| 2 | -Vin | 6 | +Vout |
| 3 | +Vin | 7 | -Vout |
| 4 | -R.S | 8 | TRIM |

■ External Output Trimming



■ Derating Curve



NOTE

1. All parameters are specified at normal input, rated load, 25°C 70% RH ambient.
 2. Ripple & noise are measured at 20MHz by using a 12" twisted pair terminated with a 0.1uF & 47uF capacitor.
 3. Line regulation is measured from low line to high line at rated load.
 4. Load regulation is measured from 10% to 100% rated load.
 5. Please prevent the converter from operating in overload or short circuit condition for more than 30 seconds.
- ※ Product Liability Disclaimer : For detailed information, please refer to <https://www.meanwell.com/serviceDisclaimer.aspx>

Packing

| Standard Tube Packing | MPQ Per Tube (PCS) | One Tube G.W. | Max. Q'TY/ Carton(PCS) | One Carton G.W. |
|--|--------------------|---------------|------------------------|-----------------|
| <p>Unit : mm</p> <p>Product</p> <p>Tube Nails</p> <p>289</p> <p>54</p> <p>22.7</p> <p>7</p> <p>Tube pattern</p> <p>CARTON L620 x W230 x H230</p> | 5 | 320g | 200 | 13.6Kg |

Installation Manual

Please refer to : <http://www.meanwell.com/manual.html>